

THE AP TOP 50

the AP top 50:

most requested products of the year



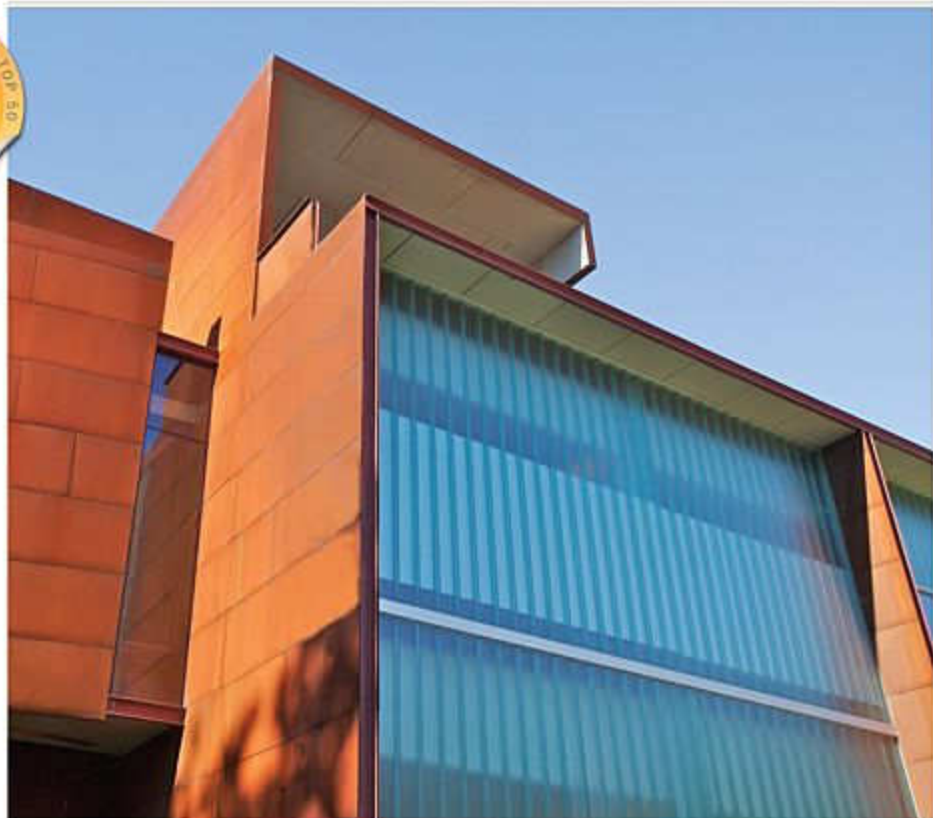
Reader Favorites of 2009

In each issue of *Architectural Products*, we bring readers in excess of 125 new products ranging from flooring to ceiling tile to glazing to concrete and insulation. In all, that's more than 1,200 products in the course of a year—and that doesn't even include the cool new offerings presented by our advertisers. To make things a little easier on the designers and specifiers that peruse our publication, we're pleased to present the Top 50, a compilation of the most requested products of 2009—both product submissions and ads—as chosen by our subscribers via our monthly reader service card.

You'll find quite a variety of items in the following pages, including a number of staples, such as building cladding elements and striking interior elements. But one trend I observed is a lighting undercurrent. Many readers seem to be interested in products relating to daylighting, be it glazing or shading systems. There were also a number of items reflecting translucent materials that might let daylight carry even further into buildings. Additionally, six of the Top 50 items were white LED products.

So in case you missed them the first time, here's a second chance to explore some of the top products your colleagues felt compelled to learn more about. Happy hunting.

—Jim Crockett, Editorial Director



CHANGING CHANNELS

Self-supporting channel glass now is available in lengths of up to 23 ft. from **Pilkington Profilit**. The glass is available in a variety of textures and colors and in varying degrees of translucency, allowing natural light to pass through while maintaining occupant privacy. It can be installed vertically or horizontally to form straight or curved walls. Optional Nanogel insulating aerogel provides added insulation for more energy-efficient exterior applications. Visit fggamerica.com or Circle 499.

COPPER COOLNESS

The new 47-story Parkview West condominium tower located near Chicago's Lake Michigan shoreline is clad in more than 33,000 sq. ft. of copper-anodized aluminum panels from **Dri-Design**. The panels are one element in a dry-joint, pressure-equalized rainscreen system, providing an exterior that won't patina but will provide color variations found in natural copper. Visit dri-design.com or Circle 498.



PVC-REINFORCED DRYWALL

Panel-Flex from **Strait-Flex** creates raised panel details in drywall. A third of the cost of installing wood paneling, Panel-Flex is a PVC tight fiber cotton composite corner tape that is identical to wood paneling such as crown molding, chair rails and decorative paneling. The lightweight, durable PVC material allows for quick installation without carpentry or fasteners. Visit straitflex.com or Circle 497.



ITALIAN FINISH

Authentic Italian Lime Plaster by **FirmoLux** offers moderate transparency and can be applied to concrete, drywall, wood and more, revealing slight variations or shades of color once applied. The finish can be used as a decorative paint and create faux effects. It inhibits mold and bacteria and contains no VOCs. Visit firmolux.com or Circle 496.





GET A GRIP!

Panel Grip dry glaze options from **Wagner** for structural glass railings meet structural code requirements for 0.5-in. and 0.75-in. tempered glass applications. Pictured above, the company's Lumenrail is an LED-illuminated product that integrates practical and decorative staircase, ramp and hallway lighting with standard handrail and guardrail technology for a sleek and simple design solution. Visit wagnercompanies.com or Circle 495



SHARP FLOORING

Bio-Glass from **Coverings Etc.** is made from 100% post-consumer recycled glass broken from bottles and jars. It is recyclable and available in shades ranging from white to dark brown. The material can be used for flooring, countertops and other decorative surfaces. The layers of compressed glass pieces create unique patterns through which light permeates, resulting in a solid surface that appears lit from within. Visit coveringsetc.com or Circle 494



IN & OUT PANELS

Fry Reglet's Graph snap-in wall panels are easy to install and customizable. Available in wood veneers, back-painted glass, metal, translucent resin and three-dimensional panels. Engineered for a non-progressive installation sequence, the panels can be removed, replaced or refreshed with ease. A lightweight, factory-fabricated aluminum custom frame minimizes field labor and is sized for each project. Visit fryreglet.com or Circle 493

IN A VISION

Available in three- and four-element glazing arrangements, structural silicone curtain wall systems from **Visionwall** offer high R- and U-values and good acoustics. Visit visionwall.com or Circle 492



WELCOME RAIN

Jay R. Smith Mfg. Co. offers a wide range of WISY inline downspout filters, vortex fine filters, storage tank components, floating filters and rainwater harvesting packages. The company sells rainwater harvesting filters and components for rooftop areas of any size. In cooperation with WISY AG and Rainwater Management Solutions (RMS), the company provides rainwater harvesting products that can contribute to the achievement of LEED credits in water use reduction, water-efficient landscaping and stormwater design, as well as the possibility for an innovation in design credit. Visit jrsmith.com or Circle 491

Rainwater Filter

